

EXCLUSIVE VISITS AT THE FLEMING COLLECTION



The Fleming Collection, Mayfair

Our exhibitions show the wealth of styles for which Scottish art is famous, from 18th century landscape painting and portraiture through to the Glasgow Boys and 20th century painters including the Scottish Colourists. Our passion for collecting contemporary art is also reflected in our exhibitions programme. A visit to The Fleming Collection offers a welcome alternative to busy blockbuster exhibitions at national museums and galleries.

The Fleming Collection is supported by a registered charity dedicated to education in Scottish Art called The Fleming-Wyfold Art Foundation.

'Perhaps the most celebrated corporate art collection in the UK' Antony Thorncroft, FT
'...a kind of national gallery of Scotland in exile' Simon Tait, Sunday Times

Two exhibition spaces

At The Fleming Collection Gallery we show four beautifully curated exhibitions each year. Paintings are drawn from a wide range of museums, galleries and private collections as well as from The Fleming Collection.

The New First Floor Gallery is exclusively a showcase for The Fleming Collection. The current display is of 30 paintings including historical works, the Glasgow Boys, the Scottish Colourists and other 20th century artists.

Access to both galleries is via The Fleming Collection, 13 Berkeley Street, London WJ1 8DU. Disabled access is limited, please enquire.

Your visit

Group visits take place on Mondays at 10am or 6pm. On arrival your guests will be met by a curator, once refreshments are served an informal curator's tour is given of the exhibition on show at The Fleming Collection Gallery. Following this a short tour of the paintings on display at the New First Floor Gallery is given. Please allow 1.5hrs for your visit. We look forward to creating a unique and educational experience for your guests.

Booking information

1. Contact us to check availability. Tel 020 7042 5735 Email events@flemingcollection.com.
2. Sign and return the Agreement and the Conditions of Venue Hire form to secure your booking.
3. 50% deposit is charged for Silver and Gold Packages.
4. Payment, final numbers and your guest list are due 7 days before the event.

Refreshments

	Per head	Time	Refreshments	Capacity minimum	Capacity maximum
Bronze	£10+vat	1000-1200hrs	Tea, coffee & biscuits	15	100
Silver	£18+vat	1800-2000hrs	Wine & crisps*	40	100***
Gold	£36+vat	1800-2000hrs	Wine & canapés**	40	100***

- * Soft drinks and two glasses of wine per head from Berry Bros & Rudd (House Wine and Good Ordinary Claret).
 ** Option includes 6 canapés per head.
 *** This package is available for groups of up to 100 guests only. Events for a greater number of guests are charged as gallery hire, please enquire.



13 Berkeley Street, London W1J 8DU
 Tel: 020 7409 5735 | www.flemingcollection.co.uk



EXHIBITIONS AT THE FLEMING COLLECTION GALLERY



Scottish Summer Exhibition

14 June – 27 August 2011

Emerging and established Scottish artists are invited to submit works for this selling exhibition. The majority of the artists on show are already represented in The Fleming Collection and other museum collections. All the works in the exhibition are for sale.



John Burningham: An Illustrated Journey

13 September – 22 December 2011

This exhibition celebrates the rich and varied career of one of Britain's most distinguished and best-loved illustrators. Burningham's iconic London Transport posters will be on show with illustrations and working drawings for his children and adult books, also 'Chitty Chitty Bang Bang' by Ian Fleming, animated films, and previously unseen archival material.

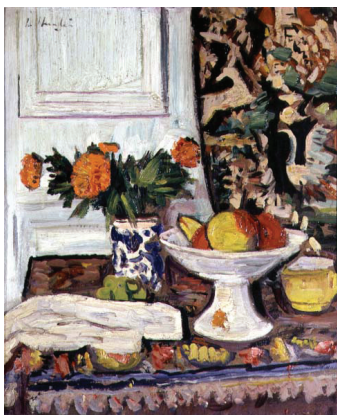


Wilhelmina Barns-Graham: A Scottish Artist in St Ives

A centenary exhibition in association with The Barnes-Graham Charitable Trust

10 January - 5 April 2012

Born in St Andrews and trained at Edinburgh College of Art, Wilhelmina Barns-Graham first went to the burgeoning artist's colony of St Ives, Cornwall in 1940 where she painted until her death in 2004. While identified as "one of Britain's most senior abstract painters", her early close association with Ben Nicholson, Barbara Hepworth, and Naum Gabo, and later with figures such as Roger Hilton, has been seen in her native country as providing 'a historic link between Scotland and St Ives'.



George Leslie Hunter (1877-1931)

23 October 2012 – 28 March 2013

This exhibition is scheduled to coincide with the publication of a monograph on the artist by Bill Smith, Trustee of The Fleming-Wyfold Art Foundation. It will be shown at City Art Centre, Edinburgh and at The Fleming Collection. Hunter is one of the four artists known as the Scottish Colourists, a group who were one of the most influential forces in twentieth century British painting.